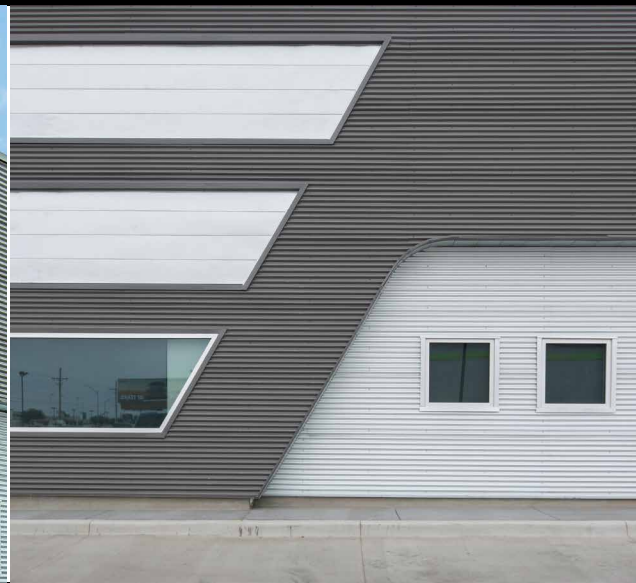
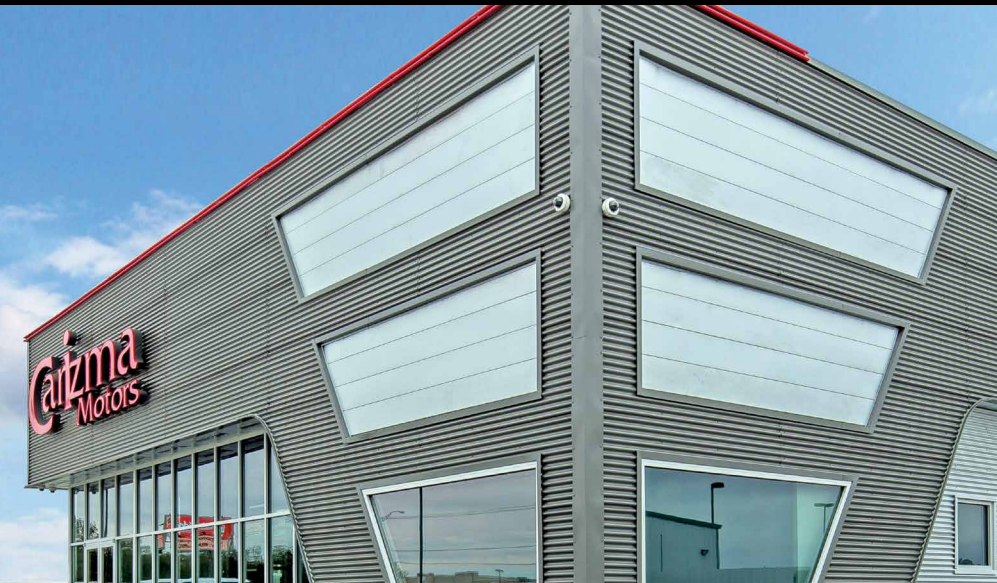


CONCEALED FASTENING SYSTEMS

FW-120 PANEL



The FW-120 panel is a concealed fastener wall and liner panel that provides a flat appearance. FW-120 is commonly used for architectural, commercial and industrial markets. The heavy gauge offering provides for large spanning capabilities, particularly in composite wall applications.

FEATURES AND BENEFITS:

- FW-120 is available in a flat profile with no beads, one bead or two beads.
- The FW-120 Panel has been tested by a certified independent laboratory in accordance with ASTM test procedures for Air Infiltration and Water Penetration at the sidelap. Test results show no air leakage at 1.57PSF and no water penetration at 6.24PSF differential pressure.
- FW-120 carries Florida approval.

PRODUCT SPECIFICATIONS

Applications: Wall and Fascia

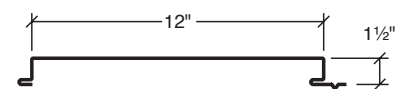
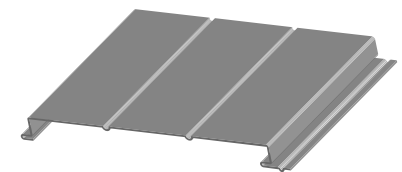
Coverage Widths: 12"

Panel Attachment: Concealed Fastening System

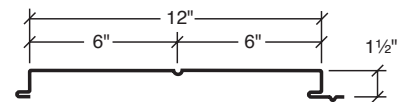
Gauges: 24 (standard); 22 and 20 (optional)

Finishes: Smooth (standard); Embossed (optional)

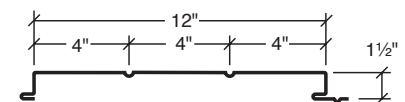
Coatings: Signature® 300



FW-120-0



FW-120-1
with Bead



FW-120-2
with Beads

METALLIC BUILDING COMPANY
7301 Fairview St. | Houston, TX 77041
866-800-6353
sales@metallic.com
METALLIC.com



CONCEALED FASTENING SYSTEMS

FW-120 PANEL

CATEGORY	CHARACTERISTIC	TEST METHOD	PURPOSE	RESULT
ENVIRONMENTAL	Air leakage	ASTM E283	Determines the air leakage rates of exterior windows, curtain walls, and doors under specified air pressure differences across the specimen	0.000 cfm/ft ² at 6.24 psf static pressure 0.113 cfm/ft ² at 20.00 psf static pressure
	Water Penetration	ASTM E331	Determines the resistance of exterior windows, curtain walls, skylights, and doors to water penetration when water is applied under uniform static air pressure difference	No uncontrolled water penetration through the panel joints at a static pressure of 13.24 psf
STRUCTURAL	Negative Wind Loads	ASTM E 1592	Provides a standard procedure to evaluate or confirm structural performance under uniform static air pressure difference	See Load Chart Section
	Positive Wind Load	AISI S100	North American Specification for the Design of Cold-Formed Steel Structural Members	See Section Properties and Allowable Load Table Section
ROOF LISTINGS	Roof Performance - Florida Approval	ASTM E 1592	Florida product approval is the approval of products and systems, which comprise the building envelope and structural frame, for compliance with the structural requirements of the Florida Building Code.	See FL# 11917.3

Descriptions and specifications contained herein were in effect at the time this publication was approved for printing. In a continuing effort to refine and improve products, Metallic reserves the right to discontinue products at any time or change specifications and/or designs without incurring obligation. To ensure you have the latest information available, please inquire or visit our website at www.metallic.com. Application details are for illustration purposes only and may not be appropriate for all environmental conditions, building designs or panel profiles. Projects should be designed to conform to applicable building codes, regulations and accepted industry practices. If there is a conflict between this document and project erection drawings, the erection drawings will take precedence.